

## Molecular detection of *Ehrlichia* spp. in blood samples of dogs in southern Iran using polymerase chain reaction

Noushin Derakhshandeh, Hassan Sharifiyazdi, Mohammad Abbaszadeh Hasiri\*

Department of Clinical Sciences, Faculty of Veterinary Medicine, Shiraz University, Shiraz, Iran.

Article Info	Abstract
<b>Article history:</b> Received: 01 July 2017 Accepted: 24 September 2017 Available online: 15 December 2017	Ehrlichiosis is a zoonotic disease which has been reported from some regions of Iran. This study was aimed to determine the presence and prevalence of ehrlichiosis in suspected dogs referred to the Faculty of Veterinary Medicine, Shiraz University, Shiraz, Iran using polymerase chain reaction (PCR). Blood samples were collected from 98 suspected dogs with at least one of the five following findings: thrombocytopenia, anemia (hematocrit < 37.00%), gastrointestinal signs and respiratory and/or central nervous system diseases. Complete blood count was performed for each sample. After genomic DNA extraction, PCR assay was carried out using a commercial PCR kit. The results showed that only three out of 98 samples (3.06%) were positive for ehrlichiosis. There was no significant difference in hematological parameters between infected and non-infected cases. These results emphasize that ehrlichiosis has a low prevalence among examined cases in southern Iran. Further serological and molecular studies are needed to clarify the epidemiological feature of this infection in different areas of Iran.
<b>Key words:</b> Dog <i>Ehrlichia</i> Epidemiology Iran Polymerase chain reaction	

© 2017 Urmia University. All rights reserved.

### تشخیص ملکولی گونه های اریلیشیا در نمونه های خون سگ های جنوب ایران با استفاده از سنجش واکنش زنجیره ای پلیمرز

#### چکیده

اریلیشوز بیماری زئونوزی است که از بعضی نقاط ایران گزارش شده است. هدف این تحقیق بررسی حضور و شیوع اریلیشوز در سگ های مشکوک به اریلیشوز ارجاعی به دانشکده دامپزشکی دانشگاه شیراز، شیراز، ایران، با استفاده از واکنش زنجیره ای پلیمرز (PCR) بود. نمونه های خون ۹۸ سگ مشکوک به اریلیشوز که دارای حداقل یکی از پنج یافته ترومبوسیتوپنی، کم خونی (هماتوکریت کمتر از ۳۷/۰۰ درصد)، علائم معده ای روده ای و بیماری های تنفسی و یا دستگاه عصبی مرکزی بودند، جمع آوری گردید. شمارش کامل سلول های خونی برای هر نمونه انجام گرفت. متعاقب استخراج DNA ژنومی، آزمایش PCR نیز با استفاده از کیت تجاری PCR صورت پذیرفت. نتایج نشان دادند که تنها سه نمونه از ۹۸ نمونه (۳/۰۶ درصد) برای اریلیشوز مثبت بودند. تفاوت معناداری در فراسنجه های خون شناسی بین موارد آلوده و غیر آلوده وجود نداشت. این نتایج بر شیوع پایین اریلیشوز در میان سگ های مورد مطالعه در جنوب ایران تاکید دارد. همچنین، تحقیقات بیشتر ملکولی و سرولوژیکی جهت آشکار شدن وضعیت اپیدمیولوژیکی این آلودگی در نواحی دیگر ایران مورد نیاز است.

واژه های کلیدی: اپیدمیولوژی، اریلیشیا، ایران، سگ، واکنش زنجیره ای پلیمرز

#### \*Correspondence:

Mohammad Abbaszadeh Hasiri. DVSc  
Department of Clinical Sciences, Faculty of Veterinary Medicine, Shiraz University, Shiraz, Iran.  
E-mail: abbaszadeh@shirazu.ac.ir

## Introduction

Canine ehrlichiosis is a tick borne disease caused by gram-negative, obligate intracellular, pleomorphic and tick-borne bacteria.<sup>1</sup> In 1935, canine monocytic ehrlichiosis was first reported by Dontien and Lestoquar.<sup>2</sup> Then, in the United States canine granulocytic ehrlichiosis (caused by *Ehrlichia ewingii*) was branded in 1971.<sup>3</sup>

Transmission of ehrlichia can occur through blood sucking arthropods such as the tick *Rhipicephalus sanguineus*.<sup>4</sup> Clinical signs of ehrlichiosis can be variable, depending on strain variation, host immune response, stage of disease and the presence of concurrent infections. Clinical findings are lethargy, inappetence, fever, weight loss, generalized lymphadenopathy, ocular and nasal discharges, mucosal and cutaneous petechial and ecchymotic hemorrhages and neurological signs.<sup>5,6</sup> The diagnosis of ehrlichiosis relies on cultivation, serology, direct microscopical examination and molecular techniques.<sup>7</sup> Smear diagnosis has low sensitivity, as intracytoplasmic morulae can be visualized only during the acute phase.<sup>8</sup> Serology cannot discriminate between a current and previous exposure to the pathogen and may show false negative results in acute ehrlichiosis. Therefore, serology is an unreliable tool for ehrlichiosis diagnosis.<sup>5</sup> Polymerase chain reaction (PCR) using whole-blood sample is the most sensitive method for diagnosis of acute ehrlichiosis.<sup>9,10</sup>

The aim of the present study was to evaluate the prevalence of ehrlichiosis in dog populations in Fars province in the south of Iran. In addition, complete blood count and epidemiological features (gender, breed, age and type of maintenance) were evaluated to determine if there was an association between these features and ehrlichiosis infection.

## Materials and Methods

**Sample collection.** From September 2014 to June 2015, a number of 98 dogs referred to the Veterinary Teaching Hospital of Shiraz University, were assessed. The study was performed in Shiraz, Fars province (southern Iran).

Blood samples were collected from cases with at least one of the five following findings: thrombocytopenia (platelet count  $\geq 140,000$  per  $\mu\text{L}$ ), anemia (hematocrit  $< 37.00\%$ ), gastrointestinal signs and respiratory and/or central nervous system diseases.

Complete history including age, breed, gender, clinical signs especially respiratory signs (sneezing, coughing and/or nasal discharge), gastrointestinal signs (vomiting or diarrhea), type of housing (outdoor or indoor), previous tick infestation and presence of the other dogs were taken. Clinical examinations including temperature, pulse, and respiratory rates, assessment of depression or fever and

thoracic auscultation were performed. Blood sample was collected via cephalic vein puncture from each dog and stored in EDTA containing tubes.

Hematological examination was carried out using automatic cell counter (Exigo, Stockholm, Sweden). Then, blood smears were prepared for microscopic investigation of morulae using Giemsa stain. Finally, samples were kept frozen at  $-20^{\circ}\text{C}$  until DNA extraction.

**Polymerase chain reaction.** Genomic DNA was extracted from 100  $\mu\text{L}$  of anticoagulated whole blood using a commercial DNA extraction kit (Qiagen®, Hilden, Germany) according to the manufacturer's instruction. In this study, molecular investigation was performed using a commercially available PCR kit (iNtRON, Daejeon, South Korea) for detection of *Ehrlichia* spp. in blood samples as previously described by Akhtardanesh *et al.*<sup>11</sup>

PCR reaction (20  $\mu\text{L}$ ) was contained i-starTaq™ DNA polymerase (2.5 U), dNTPs (250 mM each), 10X reaction-buffer, chemical stabilizer (1 X), gel loading buffer (1 X), 8-methoxypsoralen (8-MOP) (25  $\mu\text{g mL}^{-1}$ ), primers (10 pmol each), DNA template (2  $\mu\text{L}$ ;  $\sim 40$  ng) and DNase and RNase free water (18  $\mu\text{L}$ ). A PCR product of 336 bp in size was amplified using thermocycler (MG 5331; Eppendorf, Hamburg, Germany) with thermal conditions as follows: initial denaturation at  $94^{\circ}\text{C}$  for 5 min, followed by 40 amplification cycles ( $94^{\circ}\text{C}$  for 30 sec,  $52^{\circ}\text{C}$  for 30 sec and  $72^{\circ}\text{C}$  for 40 sec) and a final extension cycle ( $72^{\circ}\text{C}$  for 5 min). The presence of PCR products and their molecular weights were evaluated by electrophoresis of 7  $\mu\text{L}$  of each product in 1.50 % agarose gel stained with Red Safe dye (iNtRON) under ultraviolet illumination. Positive control (*Ehrlichia* spp. DNA was available in the commercial kit) and negative controls (distilled water and DNA from healthy dog) were used in each round of PCR.

**Statistical analysis.** The prevalence values based on gender, different breeds, ages and maintenance type of dogs were compared by Fischer exact test. Hematological parameters of positive and control group dogs were compared by Student's *t* test. The data were analyzed using SPSS software (version 16.0; SPSS Inc., Chicago, USA).

## Results

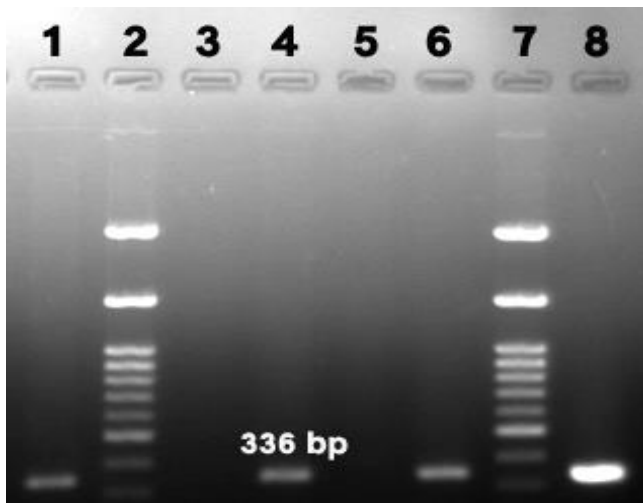
The mean ages of population were two years. The 47.30% of population was younger than two years and 52.70% were older. In physical examinations, 13 dogs (26.50%) were tick-infested. Forty dogs (40.80%) were anemic (hematocrit  $< 37.00\%$ ) and 18 cases (18.90%) were thrombocytopenic. Also, 15 (17.20%), 34 (35.40%) and 8 (16.00%) dogs had general signs (fever and lethargy), gastrointestinal signs (vomiting or diarrhea) and nervous signs (seizure and paralysis), respectively.

The results revealed that three samples (3.06%) out of 98 examined samples, were found positive using PCR

(Fig. 1). However, in stained blood smears, no evidence of inclusion bodies or morulae formation was seen.

Higher prevalence of ehrlichiosis was recorded in females (7.90%) compared to males (0.00%). All *ehrlichia*-positive cases ( $n = 3$ ) lived outdoor and were female. Two of positive dogs were mixed breeds and less than two years old. Two of positive cases housed adjacent to another dogs. Also, two cases of the positive dogs showed gastrointestinal sign (diarrhea) and one had neurological sign (seizure) on their history and physical examinations. In this study, two out of three *ehrlichia*-positive dogs had a history of tick infestation.

The seropositive dogs had a lower average count of red blood cells (RBC), ( $4.23 \times 10^6$  per mL) and hematocrit (30.20%) compared to these values (RBC count:  $5.18 \times 10^6$  per mL and hematocrit: 36.45%) in negative cases, but these differences were not statistically significant.



**Fig. 1.** Agarose gel of PCR products (336 bp) obtained from positive cases for *Ehrlichia* spp. Lane 2 and 7 are molecular ladder lane 8 is positive control.

## Discussion

For the first time, canine ehrlichiosis was reported in 1935 by Donatien and Lestoquard in Algeria in tick-infested dogs.<sup>2</sup> During recent years, molecular identification of canine ehrlichiosis has been reported in dogs, both domestic and wild, in many parts of the world.<sup>12</sup> In Iran, the first morphological evidence of possible dog infection with *Ehrlichia* was notified in Fars province.<sup>13</sup> The present study is the first report of the molecular detection of ehrlichiosis in dog populations in southern Iran. The results revealed a low overall prevalence (3.06%) of *Ehrlichia* infection in this area.

Some species of canine *Ehrlichia* have also been proposed to be potential zoonoses.<sup>14,15</sup> Therefore, the role of infected dogs as potential sources of infection for humans is important due to zoonotic aspects of disease, especially in immunocompromised persons.

The results of the present study showed that PCR is more sensitive than direct examination of stained blood smears for detecting ehrlichiosis in dogs. Morulae were not seen in none of the samples with clinical signs of disease and even in the PCR-positive cases, which is in agreement with other studies.<sup>8,16</sup> *Ehrlichia* species multiply in the blood cells and form intracytoplasmic microcolonies called morulae during the acute phase of infection.<sup>17</sup> Unfortunately, the observation of morulae is difficult and time-consuming and has been estimated to be successful in only about 4.00% of the cases.<sup>18</sup> Previously, some studies also described that negative hematological results can occur in chronically infected dogs.<sup>19</sup> Accordingly, PCR test has been suggested as a sensitive method for detection of organisms, especially in the chronic stage of infection.<sup>20,21</sup>

Some researchers reported that *E. canis* can infect all breeds of dogs.<sup>22</sup> However, the German shepherd dogs showed more severe form of the disease with a higher morbidity and mortality compared to the other breeds. In this study, no breed predilection has been established for the German shepherd dog.

The reported prevalence of ehrlichiosis from other regions of Iran showed that Iran is an endemic country for this infection. In Tehran, blood samples from 240 dogs were analyzed by PCR and a prevalence of 16.50% was reported.<sup>23</sup> In Kerman, blood samples were analyzed by indirect immunofluorescence antibody test (IFA) and rapid immunochromatography assay (ICA) to detect antibodies against *E. canis* in 123 apparently healthy dogs.<sup>24</sup> The overall prevalence rate in their study was 14.63% and they found morulae formation only in three seropositive dogs (16.60%) during blood smear examinations. Ehrlichiosis have been reported in 9.60% of 198 companion seropositive dogs by means of IFA and ICA in Ahvaz. Morulae of *E. canis* were observed in monocyte of four infected dogs (2.02%).<sup>25</sup> Also, a low seroprevalence of infection (0.80%) in North Khorasan of Iran (Mashhad) was determined using IFA test.<sup>26</sup> In the present study, prevalence of ehrlichiosis was 3.060%. The mentioned researches have performed on both healthy and diseased cases, in contrast, in the present study only suspected cases were included in our molecular study for detection. So, the actual prevalence of detectable positive cases may be lower than 3.06%. The results showed that ehrlichiosis is not endemic in Fars province.

The variation in the prevalence of ehrlichiosis in different studies may be due to factors such as different diagnostic methods, sample size, geographical area, distribution of tick species and sampling season.<sup>27</sup>

Ticks act as mechanical vector of ehrlichiosis. The frequency of canine ehrlichiosis was higher in tick-infested dogs (two out of three cases) which is in agreement with studies of Costa *et al.* and Khazani *et al.*<sup>28,29</sup> However, due to few positive cases in this study, infection rate was not statistically related to tick infestations ( $p > 0.05$ ).

The brown dog tick, *Rhipicephalus sanguineus*, is the main vector for *Ehrlichia* in dogs. *Rhipicephalus sanguineus* is broadly distributed especially in tropical and subtropical areas of the world.<sup>30,31</sup> Canine infestations by *R. sanguineus* in Fars province was also reported.<sup>32</sup>

In the present study, canine ehrlichiosis was observed only in female dogs which is in agreement with the research of Milanjeet *et al.*<sup>27</sup> Nevertheless, it is not similar to Maazi *et al.* and Solano-Gallego *et al.* findings.<sup>23,33</sup> The most positive cases of ehrlichiosis were observed in outdoor (3/3), younger (< 2years) (2/3), mix breeds (2/3) and female (3/3) dogs and in dogs that lived with other dogs (2/3). In the present study, the association of these risk factors and prevalence of ehrlichiosis was not significant. Studies of Akhtardanesh *et al.* and Maazi *et al.* showed that there were no relations between canine ehrlichiosis and age, breed, sex and type of dogs housing.<sup>11,23</sup>

The clinical sign of disease may vary based on infective strain, infectious dose, host's breed, immunity of the infected dog and co-infection with other microorganisms. In the present study, neurological and gastrointestinal involvements were present in one positive case. It seems that neurological signs as a result of meningeal bleeding and/or meningitis can happen in the positive cases.<sup>20</sup>

The most common hematological abnormalities associated with ehrlichiosis are anemia and thrombocytopenia.<sup>10</sup> In this study, anemia (hematocrit < 37.00%) and thrombocytopenia (platelet count  $\geq$  140,000 per  $\mu$ L) were observed in two of positive cases. Although hematological findings such as anemia, thrombocytopenia and leukopenia were more frequent in positive dogs, because of few positive cases, ehrlichiosis was not significantly related to hematological disorders. This result is in agreement with a number of previous studies.<sup>34-36</sup> However, Milanjeet *et al.* showed that canine ehrlichiosis is related to significant hematological abnormalities.<sup>27</sup>

This is the first molecular detection of ehrlichiosis in dogs in southern Iran which highlights the need for continuous *Ehrlichia* spp. surveillance in Iran and assessing their effect on human health. Accordingly, further molecular investigations and sequencing are needed to clarify the epidemiological importance of disease and also further studies should be performed in other tick borne diseases like anaplasmosis and babesiosis in which co-infections with *Ehrlichia* may exist.

## References

- Mavromatis K, Doyle CK, Lykidis A. The genome of the obligately intracellular bacterium *Ehrlichia canis* reveals themes of complex membrane structure and immune evasion strategies. *J Bacteriol* 2006; 188: 4015-4023.
- Donatien A, Lestoquard F. Existence in Algeria of a rickettsia of the dog [French]. *Bull Soc Pathol Exot* 1935; 28: 418-419.
- Greene CE. Infectious diseases of the dog and cat. 3<sup>rd</sup> ed. Philadelphia, USA: Saunders 2012; 310-319.
- Harrus S, Kenny M, Miara L. Comparison of simultaneous splenic sample PCR with blood sample PCR for diagnosis and treatment of experimental *Ehrlichia canis* infection. *Antimicrob Agents Chemother* 2004; 48: 4488-4490.
- Kohn B, Galke D, Beelitz P, et al. Clinical features of canine granulocytic anaplasmosis in 18 naturally infected dogs. *J Vet Inter Med* 2008; 22(6): 1289-1295.
- Sainz Á, Roura X, Miró G, et al. Guideline for veterinary practitioners on canine ehrlichiosis and anaplasmosis in Europe. *Parasitol Vectors* 2015; 8: 75.
- Mylonakis M, Ceron J, Leontides L, et al. Serum acute phase proteins as clinical phase indicators and outcome predictors in naturally occurring canine monocytic ehrlichiosis. *J Vet Inter Med* 2011; 25: 811-817.
- RotondanoTEF, Almeida AMP, Lustosa EMC, et al. An assessment of whole blood and fractions by nested PCR as a DNA source for diagnosing canine ehrlichiosis and anaplasmosis. *Sci World J* 2012; <http://dx.doi.org/10.1100/2012/605743>.
- Little SE, O'Connor TP, Hempstead J, et al. *Ehrlichia ewingii* infection and exposure rates in dogs from the southcentral United States. *Vet Parasit* 2010; 172: 355-360.
- Neer T. anine Monocytic and Granulocytic Ehrlichiosis. In: Greene CE (Ed) Infectious diseases of the dog and cat, 2<sup>nd</sup> ed. Philadelphia, USA: WB Saunders 1998; 139-147.
- Akhtardanesh B, Khalili M, Ghanbarpour R, et al. Molecular evidences of ehrlichiosis as an emerging zoonotic disease in Kerman city. *J Kerman U Med Sci* 2012; 19: 422-432.
- Skotarczak B. Canine ehrlichiosis. *Ann Agric Environ Med* 2003; 10(2):137-142.
- Jafari S, Gaur S, Hashemi A. Prevalence of *Ehrlichia canis* in dog population of Shiraz, Fars province of Iran. *J Ap Anim Res* 1997; 11: 19-23.
- Buller RS, Arens M, Hmiel SP, et al. *Ehrlichia ewingii*, a newly recognized agent of human ehrlichiosis. *New England J Med* 1999; 341(3):148-155.
- Perez M, Bodor M, Zhang C, et al. Human infection with *Ehrlichia canis* accompanied by clinical signs in Venezuela. *Ann N Y Acad Sci* 2006; 1078(1): 110-117.
- Salem N, Rakha G, Baraka T. Naturally occurring ehrlichiosis in Egyptian dogs. *Iran J Vet Res* 2013; 15: 54-57.
- McQuiston JH, McCall CL, Nicholson WL. Ehrlichiosis and related infections. *J Am Vet Med Assoc* 2003; 223: 1750-1756.
- Woody BJ, Hoskins JD. Ehrlichial diseases of dogs. *Vet Clin North Am Small Anim Pract* 1991; 21:75-98.

19. Harvey JW, Simpson CF, Gaskin JM. Cyclic thrombocytopenia induced by a Rickettsia-like agent in dogs. *J Infect Dis* 1978; 137: 182-188.
20. Harrus S, Waner T. Diagnosis of canine monocytic ehrlichiosis (*Ehrlichia canis*): An overview. *Vet J* 2011; 187(3): 292-296.
21. Wen B, Rikihisa Y, Mott JM, et al. Comparison of nested PCR with immunofluorescent-antibody assay for detection of *Ehrlichia canis* infection in dogs treated with doxycycline. *J Clin Microbiol* 1997; 35(7): 1852-1855.
22. Nyindo M, Huxsoll DL, Ristic M, et al. Cell-mediated and humoral immune responses of German Shepherd dogs and Beagles to experimental infection with *Ehrlichia canis*. *American J Vet Res* 1980; 41: 250-254.
23. Maazi N, Malmasi A, Shayan P, et al. Molecular and serological detection of *Ehrlichia canis* in naturally exposed dogs in Iran: An analysis on associated risk factors. *Rev Bras Parasitol Vet* 2013; 23: 16-22.
24. Akhtardanesh B, Ghanbarpour R, Blourizadeh H. Serological evidence of canine monocytic ehrlichiosis in Iran. *Comp Clin Pathol* 2009; 19: 469-474.
25. Avizeh R, Mosallanejad B, Jalali M, et al. Seroprevalence of *Ehrlichia canis* in dogs referred to Veterinary Hospital of Shahid Chamran University of Ahvaz, Iran. *Arch Razi Inst* 2010; 65: 21-26.
26. Ansari-Mood M, Khoshnegah J, Mohri M, et al. Seroprevalence and risk factors of *Ehrlichia canis* infection among companion dogs of Mashhad, North East of Iran, 2009–2010. *J Arthropod Borne Dis* 2010; 9(2): 184-194.
27. Milanjeet HS, Singh NK, Singh ND, et al. Molecular prevalence and risk factors for the occurrence of canine monocytic ehrlichiosis. *Vet Med* 2014; 59(3): 129-136.
28. Costa LM, Rembeck K, Ribeiro, et al. Sero-prevalence and risk indicators for canine ehrlichiosis in three rural areas of Brazil. *Vet J* 2007; 174(3): 673-676.
29. Khazeni A, Telmadarraiy Z, Oshaghi MA, et al. Molecular detection of *Ehrlichia canis* in ticks population collected on dogs in Meshkin-Shahr, Ardebil province, Iran. *J Biomed Sci Eng* 2013; 6: 1-5.
30. Groves MG, Dennis GL, Amyx HL, et al. Transmission of *Ehrlichia canis* to dog by ticks (*Rhipicephalus sanguineus*). *Am J Vet Res* 1975; 36: 937-940.
31. Johnson E, Ewing S, Barker R, et al. Experimental transmission of *Ehrlichia canis* (Rickettsiales: Ehrlichieae) by *Dermacentor variabilis* (Acari: Ixodidae). *Vet Parasit* 1998; 74: 277-288.
32. Shoorijeh SJ, Ghasrodashti AR, Tamadon A, et al. Seasonal frequency of ectoparasite infestation in dogs from Shiraz, Southern Iran. *Turkish J Vet Anim Sci* 2008; 32(4): 309-313.
33. Solano-Gallego L, Trotta M, Razia L, et al. Molecular survey of *Ehrlichia canis* and *Anaplasma phagocytophilum* from blood of dogs in Italy. *Ann N Y Acad Sci* 2006; 1078: 515-518.
34. Bulla C, Takahira RK, Araújo Jr JP, et al. The relationship between the degree of thrombocytopenia and infection with *Ehrlichia canis* in an endemic area. *Vet Res* 2004; 35: 141-146.
35. Dagnone AS, DeMoraes HSA, Vidotto MC, et al. Ehrlichiosis in anemic, thrombocytopenic, or tick-infested dogs from a hospital population in South Brazil. *Vet Parasit* 2003; 117: 285-290.
36. Silva GCFD, Benitez ADN, Giroto A, et al. Occurrence of *Ehrlichia canis* and *Anaplasma platys* in household dogs from northern Parana. *Rev Bras Parasitol Vet* 2012; 21: 379-385.